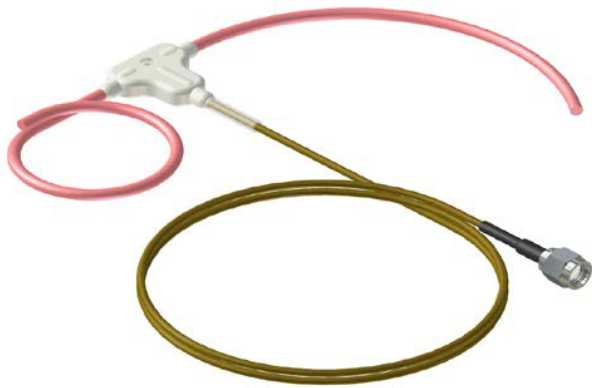


Body Worn Antenna

18/05/2016 v5



Dipole antenna

Tunable to individual user

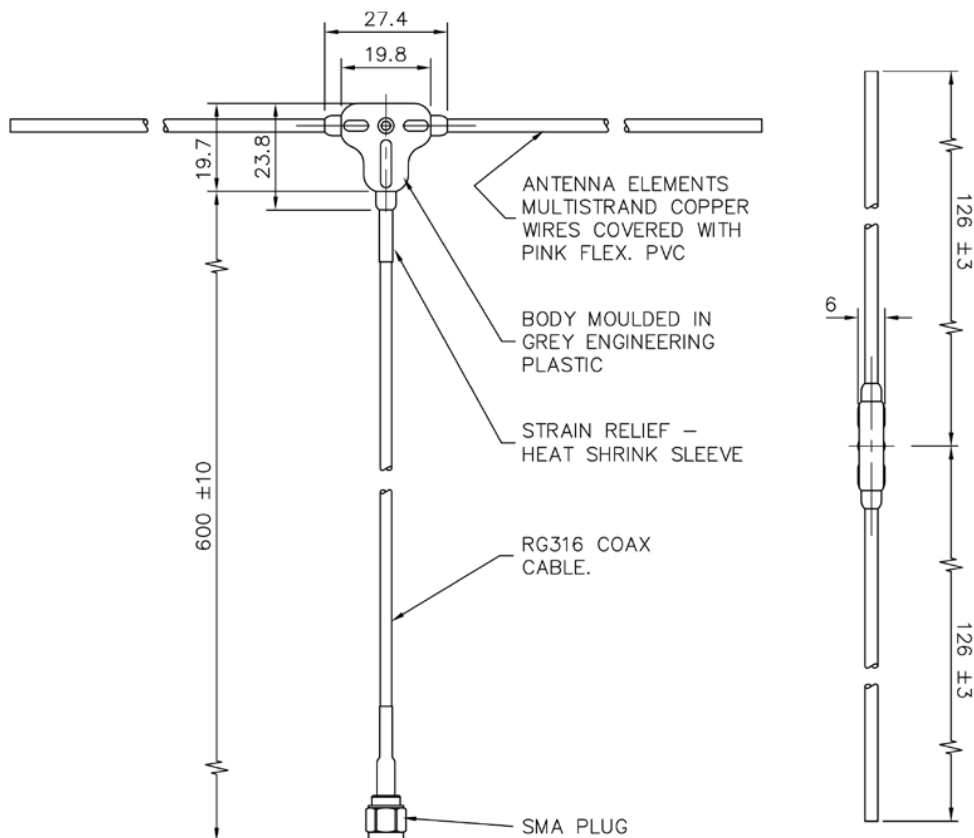
Flexible wire elements

The Body Worn Dipole Antenna is specifically designed for undercover operations.

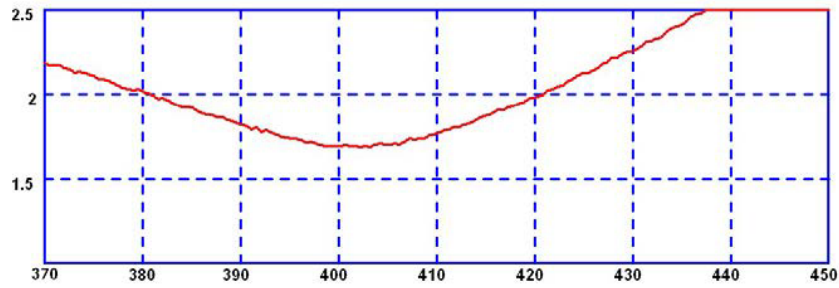
The wires are taped to a person's body so that their appearance is as discreet as possible. The antenna is worn across the shoulders and down the back.

Once in position, the antenna is tuned to the required frequency so that optimal performance can be achieved.

Technical Drawing



Typical VSWR*



*BWDT-TET VSWR shown for illustration when mounted on a user. Actual performance may vary when mounted.

Part No.	BWDT-S1-SP	BWDT-S2-SP	BWDT-TET-SP	BWDT-495-SP	BWDT-815-SP
Electrical Data					
Frequency Range (MHz)	380-400	410-430	380-430	470-520	760-890
Peak Gain (In Free Space)	2dBi				
Nominal Polarisation	Vertical				
Configuration	Flexible ½ wave dipole				
Impedance	50Ω				
Max Input Power (W)	10				
Mechanical Data					
Dimensions (mm)	Length	23.8 (0.93")			
	Width	27.4 (1.08")			
	Height	6 (0.24")			
Operating Temp (°C)	-40° / +80°C (-40° / 176°F)				
Material	TPE				
Colour	Grey				
Antenna Elements					
Antenna element length (mm)	2 × 135 (5.3")	2 × 124 (4.9")	2 × 126 (4.9")	2 × 106 (4.2")	2 × 70 (2.7")
Type	Multistrand copper wires				
Colour	Pink				
Cable Data					
Type	RG316 coaxial cable				
Length (m)	0.6 (2')				
Termination	SMA Plug				

*Panorama recommends that users should conduct a risk assessment related to the actual power and installation location being utilised.

Waiver: The data given above is indicative of the performance of the product/s under particular conditions and does not imply a guarantee of performance. These specifications are subject to change without notice.

Copyright © Panorama Antennas Ltd. All rights reserved.