

## SPECIFICATION

Module	Project	SU20
Hull	Hull size	1.18m (L) X0.7m (W) X0.4m (H)
	Hull material	High-impact GFRP
	Hull shape	Triple-hulled vessel
	Hull weight	12.8kg
	Load	42kg
	IP level	IP67
	Moon pool diameter	23cm
	Performance in wind and wave-resistance	≤smooth-wavelet 0.1~0.5m, ≤wind speed 3BF, 3.4~5.4m/s
	Safety navigation	360°camera, avoid obstacles, navigation lights, shallow water alert and auto come backward, anti-waterweeds propellers.
Power	Power mode	Electricity
	Battery	33V, 45Ah
	Propeller	Culvert-design, simple installation
	Maximum speed	7m/s
	Battery life	5 hours@2m/s
Communi-cation	Communication range	Remote controller 2 KM, 3G/4G no limitation
	Data storage	Multiple data storage path: Android remote controller, SU20 control unit, cloud server
	Remote controller	9.2 inch screen, battery 20000 mA/H, 6-20 hours operation time, 1034g weight, size 272*183*94mm
Software	Remote controller	Android software in H16 controller, combine the autopilot, remote control, navigation and data collection function all in one
	Data process software	Data process software install in Windows OS computer, support data replay, tide station correction, IMU correction, SVP correction, coordinate system post process etc. functions
Build in GNSS	Antenna	Dual GNSS antenna
	GNSS	Support BDS(BDS-3, BDS-2), GPS, GLONASS, Galileo, IRNSS, QZSS, SBAS, support BDS-PPP
	RTK initialize time	Less than 5s
	BDS-PPP accuracy	H: less than 10cm
	Heading accuracy	0.15°@1m baseline
Echo sounder	Specification	Standard SDE-18s echo sounder, optional SDE-19S and SDE-19D. SDE-18S: 200Khz, 0.15-100m measure depth SDE-19S: 200khz, 0.3 - 200m. SDE-19D: 200Khz/20Khz, 0.3 - 600m

Note: all information above is subject to change without any prior notice.

# SU20

## SOUTH USV



# SU20

SOUTH USV



## Profile



With more than 10 years of USV development and project experience. SOUTH SU20 USV solution combine with the GNSS receiver, echo sounder, camera, Android survey software in remote controller and millimeter-wave radar. The M sharp, double-deck hull design, and high performance propeller, will bring you a excellent experience. SU20 can load echo sounder, ADCP, side scan sonar, multi-beam echo sounder etc. SOUTH SU20 apply in the hydrographic survey, under water research, geological detection, and so on.

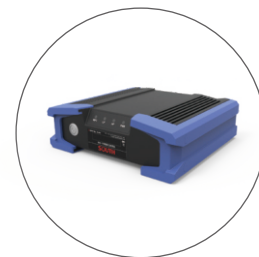
### Loaded equipment:



ADCP



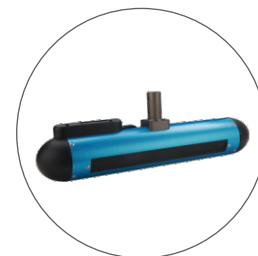
Sub bottom profiler



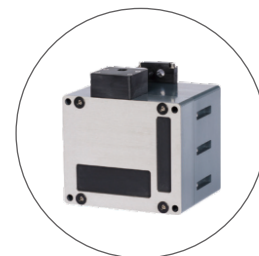
Dual frequency echo sounder



Water quality sensor



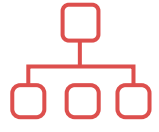

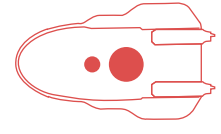







Side scan sonar



Multi-beam echo sounder

## Advantages

 <p>Battery display</p>	 <p>High performance GNSS</p>	 <p>All in one design Main control unit</p>	 <p>All in one design remote controller</p>
 <p>Moon pool design</p>	 <p>Auto pilot</p>	 <p>Devices replace simply</p>	 <p>Avoid obstacle</p>
 <p>Long life propeller</p>	 <p>360° camera</p>		

