

NX-5700/5800

NEXEDGE VHF/UHF MOBILE RADIOS

NXDN™

DMR



DMR-based T3&S
TRUNKING

DMR Auto Slot Select



GPS

FleetSync®

5-tone

FEATURE HIGHLIGHTS

- **Multi-Digital** operation in NXDN, DMR and P25 (Phases 1 & 2) protocols
- **Any combination of two digital protocols** can be selected from NXDN, DMR, and P25
- **Mixed Digital & FM Analog Operation** allows intelligent migration in mixed sites and easy migration with digital radios in other sites
- **Large, Color 2.55" (154 x 422 pixels) TFT Display** for at-a-glance operational status checking
- **Easy to follow GUI** and **Multi-line Text** to convey more information
- **Dual Remote Control Head and Multi-Band (Multi RF Deck) Control** Option providing scalable configurations for various operations and applications
- **Built-In GPS Receiver with Optional GPS Active Antenna (KRA-40G)** for effective fleet management
- **Bluetooth® Module built-in** for hands-free operation
- Renowned KENWOOD Audio Quality can be achieved with **Active Noise Reduction (ANR)** that utilizes built-in DSP for suppression of ambient noise
- Built-in **56-bit DES Encryption**
- Optional **256-bit AES Encryption**
- **microSD/SDHC* Memory Card Slot** (*Up to 2GB/32GB)
- **IP54/55 and MIL-STD-810 C/D/E/F/G**

GENERAL FEATURES

- 25 W to 5 W (136-174 MHz) Model
- 25 W to 5 W (400-470 MHz) Model
- Maximum of 4,000 CH/Radio capacity, 512 CH/Zone, 128 Zones
- DB-25 Accessory Connector
- AMBE+2™ Enhanced Vocoder
- 4 W Speaker Audio

DIGITAL – NXDN MODE

- Gen2 & NXDN Type-C Trunked Operation
- NXDN Conventional Operation
- 6.25 & 12.5 kHz Channel Spacing
- Over-the-Air Alias
- Over-the-Air Programming
- Paging Call
- Emergency Call
- All Group Call
- Status Messaging
- Remote Stun/Kill
- Remote Check
- Short & Long Data Messages
- NXDN Digital Scrambler Included

DIGITAL – DMR MODE

- S-Trunking
- DMR Tier III Trunking
- DMR Tier II conventional
- DMR Auto Slot Select
- Site Roaming
- Two-slot TDMA in 12.5kHz channels
- Call Interruption
- Dual-slot Direct Mode
- Energy Efficient
- DMR Enhanced Encryption
- DMR Over-the-Air-Programming

DIGITAL – P25 MODE

- P25 Phase 1 Conventional/Trunked Operation
- P25 Phase 2 Trunked Operation
- Talk Group ID Lists
- Individual ID Lists
- Caller ID Display
- Remote Monitor / Remote Check
- Radio Inhibit
- Encryption Key Zeroize & Retention
- P25 Over-the-Air Re-keying
- P25 Over-the-Air Programming
- P25 Enhanced Encryption

ANALOGUE – FM MODE

- Conventional & LTR Zones
- FleetSync®/II: PTT ID ANI / Caller ID Display, Selective / Group Call, Emergency Status / Text Messages
- MDC-1200: PTT ID ANI / Caller ID Display, Emergency, Radio Check / Inhibit
- QT / DQT & 5-Tone

MULTIPLE CONFIGURATIONS

The NX-5000 mobile series allows users to create a variety of configurations to suit different requirements by combining different options. Some of the standard configurations are:

- Single Remote Control Head x Single RF Deck
- Dual Remote Control Heads x Single RF Deck
- Dual Remote Control Heads x Multi RF Decks
- Other combinations are available. Consult your local KENWOOD dealer for more.



OPTIONAL ACCESSORIES

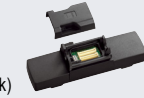
- **KCH-19**
BASIC CONTROL HEAD KIT



- **KCH-20R**
FEATURED CONTROL HEAD



- **KRK-15B**
CONTROL HEAD REMOTE KIT
(Adapter for the RF Deck)



- **KRK-14H**
CONTROL HEAD INTERFACE KIT
(Adapter for the Head)



- **KCT-71**
REMOTE CONTROL CABLE
(Available in 3 lengths of 5.2 m, 7.6 m, and 0.5 m)



- **KWD-AE31**
SECURE CRYPTOGRAPHIC MODULE

- **KMC-35**
MICROPHONE



- **KMC-36**
KEYPAD MICROPHONE



- **KCT-73MIC**
EXTERNAL MIC KIT
(Cable length: 3 m)



- **KCT-74PTT**
EXTERNAL PTT KIT
(Cable length: 3 m)



- **KES-3**
EXTERNAL SPEAKER
(Compact low profile; ϕ 3.5 mm plug)



- **KES-5**
EXTERNAL SPEAKER
(40 W max input, Requires KAP-2)



- **KCT-23**
DC POWER CABLE
M: 3m / M3: 7m



- **KCT-46**
IGNITION SENSE CABLE



- **KLF-2**
LINE FILTER



- **KMB-10**
KEY LOCK ADAPTER



- **KAP-2**
HORN ALERT/P.A. RELAY UNIT



- **KRA-40G**
GPS ACTIVE ANTENNA



- **KPG-180AP**
OTAP MANAGER

All accessories and options may not be available in all markets. Contact an authorised KENWOOD dealer for details and complete list of all accessories and options.

SPECIFICATIONS

		Mobile Radios	
GENERAL		NX-5700	NX-5800
Frequency Range		136-174 MHz	400-470 MHz
Max. Channels Per Radio		1024 (Up to 4000 channels with option)	
Number of Zones		128	
Max. Channels Per Zone		512	
Channel Spacing	Analog	12.5 / 20 / 25 kHz	
	Digital	6.25 / 12.5 kHz	
Power Supply		13.2 V DC (10.8 - 15.6 V DC)	
Current Drain	Standby	0.45 A	
	RX	2.3 A	
	TX	9 A	
Operating Temperature		-30 °C to +60 °C	
Frequency Stability (-30°C to +60°C; +25°C Ref.)		±0.5 ppm	
Dimensions (W x H x D) Radio with Control Head		171 x 48 x 176 mm	
Weight: Radio with Control Head		1.6 kg	
Applicable Standards	ETSI (EMC)	EN 301 489-3, EN 301 489-5, EN 301 489-17	
	ETSI (Spectrum)	EN 300 086, EN 300 113, EN 300 219, EN 300 328, EN 300 440, EN 301 166	
	ETSI Safety	EN 60065, EN 60215, EN 60950-1	

Specifications are measured according to applicable standards, and subject to change without notice, due to advancements in technology.

		Mobile Radios	
RECEIVER		NX-5700	NX-5800
Sensitivity (Digital)	NXDN 3 % BER (6.25 kHz / 12.5 kHz)	0.25 μ V / 0.32 μ V	
	NXDN 1 % BER (6.25 kHz / 12.5 kHz)	-4 dB μ V (0.32 μ V) / -1 dB μ V (0.45 μ V)	
	DMR 5 % BER	0.3 μ V (-117.5 dBm)	
	DMR 1 % BER	0.45 μ V (-114 dBm)	
Sensitivity (Analog)	P25 5 % BER	0.28 μ V	
	12 dB SINAD (12.5 / 20&25 kHz)	0.32 μ V / 0.28 μ V	
Selectivity	20 dB SINAD (12.5 / 20&25 kHz)	-1 dB μ V (0.45 μ V) / -3 dB μ V (0.35 μ V)	
	Analogue 12.5 kHz	70 dB	
	Analogue 20 kHz	78 dB	
Intermodulation (Analog)	Analogue 25 kHz	80 dB	
		70 dB	
Spurious Rejection (Analog)		80 dB	
Audio Distortion		2 %	
Audio Output Power		4 W / 4 Ω (Remote Control Head: 3 W / 4 Ω)	
TRANSMITTER		NX-5700	NX-5800
RF Power Output Power		25 to 5 W	
Spurious Emission		-36 dBm \leq 1 GHz, -30 dBm > 1 GHz	
FM Hum & Noise (Analog): @25 / 20 / 12.5 kHz		50 / 50 / 45 dB	
Audio Distortion		2 %	
Emission Designator		16K0F3E, 14K0F2D, 14K0F3E, 12K0F2D, 11K0F3E, 8K50F3E, 7K50F2D, 8K30F1E, 8K30F1D, 8K30F7W, 8K10F1E, 8K10F1D, 8K10F1W, 7K60FXE, 7K60FXD, 4K00F1E, 4K00F1D, 4K00F7W, 4K00F2D	

APPLICABLE MIL-STD & IP*1

MIL Standard	810C Methods/ Procedures	810D Methods/ Procedures	810E Methods/ Procedures	810F Methods/ Procedures	810G Methods/ Procedures
Low Pressure	500.1/I	500.2/I, II	500.3/I, II	500.4/I, II	500.5/I, II
High Temperature	501.1/I, II	501.2/I, II	501.3/I, II	501.4/I, II	501.5/I, II
Low Temperature	502.1/I	502.2/I, II	502.3/I, II	502.4/I, II	502.5/I, II
Temperature Shock	503.1/I	503.2/I	503.3/I	503.4/I, II	503.5/I
Solar Radiation	505.1/I	505.2/I	505.3/I	505.4/I	505.5/I
Rain	506.1/I, II	506.2/I, II	506.3/I, II	506.4/I, III	506.5/I, III
Humidity	507.1/I, II	507.2/II, III	507.3/II, III	507.4	507.5/II
Salt Fog	509.1/I	509.2/I	509.3/I	509.4	509.5
Dust	510.1/I	510.2/I	510.3/I	510.4/I, III	510.5/I
Vibration	514.2/VIII, X	514.3/I	514.4/I	514.5/I	514.6/I
Shock	516.2/I, II, V	516.3/I, IV, V	516.4/I, IV, V	516.5/I, IV, V	516.6/I, IV, V
International Protection Standard					
Dust & Water			IP54, IP55*1		

*1 All interfaces must be fully sealed with appropriate covers or by designated genuine accessories.

• The Bluetooth word mark and logos are registered trademarks owned by the Bluetooth SIG, Inc. • SD and microSD are trademarks of SD-3C, LLC in the United States, and/or other countries
 • AMBE+2™ is a trademark of Digital Voice Systems Inc. • Windows® is a registered trademark of Microsoft Corporation. • NXDN™ is a trademark of JVCKENWOOD Corporation and Icom Inc.
 • NEXEDGE® is a registered trademark of JVCKENWOOD Corporation. • FleetSync® is a registered trademark of JVCKENWOOD Corporation.

JVCKENWOOD U.K. Limited

<https://kenwoodcommunications.co.uk>

KENWOOD Communications
Global Website



comms.kenwood.com



ISO9001 Registered
Communications Systems Division
JVCKENWOOD Corporation

CL855E-E-2R2